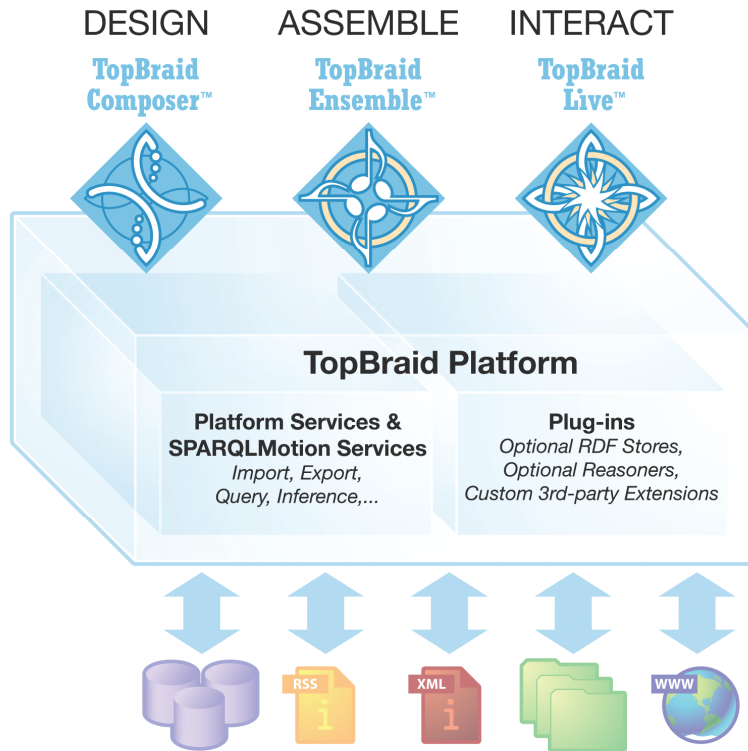


# TopBraid Ensemble™

## is a Semantic Web application assembly toolkit

Part of TopBraid Suite™ – integrated semantic solution products.



### Key Features Include:

- Application assembly toolkit for agile development of Semantic Web applications
- Rich Internet Application (RIA) components – form, grid, tree, map, graphs, visual query editor and others
- Select, configure, wire components without programming
- Extend application behavior with SPARQLMotion scripts
- Utilizes client-side RDF cache for scalability and responsiveness
- Provides easy to use Flex RDF API for custom development
- Specifically designed to deliver web applications with the TopBraid Live server
- Integrated with TopBraid Composer Maestro Edition™ for testing applications

### TopBraid Suite™ Products

- TopBraid Composer™ – Semantic Modeling and Application Development Tool
- TopBraid Composer Maestro Edition™ – Composer plus Extended Capabilities
- TopBraid Live™ – Enterprise Platform for Semantic Web Applications
- **TopBraid Ensemble™** – Semantic Web Application Assembly Toolkit

### Benefits:

- Business Responsiveness - Flexible semantic model-driven solutions easily support business changes
- Agile Development - Speeds up application development, testing and deployment processes
- Cost Savings - Minimizes costs to develop and maintain applications
- Business User Enablement - Direct participation in application development and evolution

For more information visit:

[http://www.topquadrant.com/products/TB\\_Ensemble.html](http://www.topquadrant.com/products/TB_Ensemble.html), or

For questions or requests, or to schedule a demo of TopBraid Ensemble contact us at (703) 299-9330 or [sales@topquadrant.com](mailto:sales@topquadrant.com)



TopQuadrant is a premier semantic web solutions company with offices in Alexandria, VA; at NASA Research Park, CA, and an affiliate in Seoul, South Korea. Please contact us at:

TopQuadrant, Inc.  
330 John Carlyle Street  
Suite 180  
Alexandria, VA 22314-5760

[www.topquadrant.com](http://www.topquadrant.com)  
Phone: 703 299 9330  
Fax: 703 299 8330

**TopBraid Ensemble™** can be used to quickly assemble a variety of dynamic model-based Rich Internet Applications including systems for collaborative development and management of controlled vocabularies, dynamic discovery and analysis, search and exploration applications, mashups and semantic wikis.

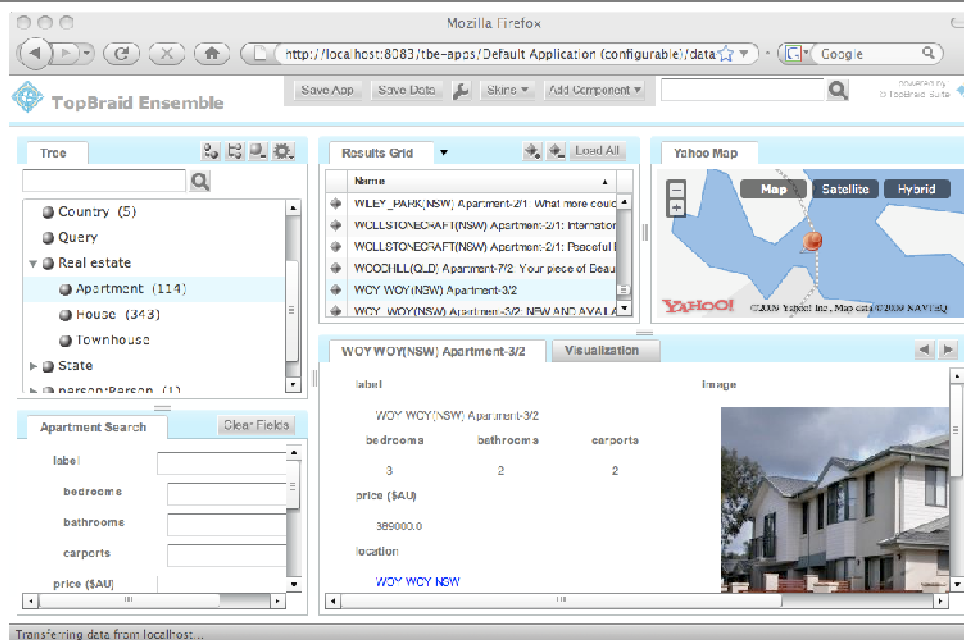


Illustration of a simple application assembled using TopBraid Ensemble – The real estate search application allows end users to find desired housing by combining ontological and geospatial search

**Server Requirements for applications created using TopBraid Ensemble**  
TopBraid Live™ and any Java Servlet container such as Apache Tomcat™. Applications can work with file-stored data and/or by using RDF databases.

#### Databases supported

Oracle 11G, Franz AllegroGraph, Sesame and Jena.

#### Client Requirements

Any web browser with Flash™ version 10.0 or higher plug-in. For more detailed information see: <http://www.topquadrant.com/products/supportedConfigs.html>

TopBraid Ensemble is bundled with TopBraid Composer Maestro Edition for ease of development and testing.

TopBraid Ensemble's forms, reports and search dialogs are fully driven by the semantic models. Ready-to-use fully configurable library of components include:

- Tree
- Form (for browsing and editing)
- Grid
- Map
- Graph (for viewing and editing)
- Search
- Visual SPARQL query builder
- Calendar
- Basket (for bookmarks, etc)
- Diagrams and charts
- SPARQLMotion player (for integration with server-side scripts)
- SPARQL-based relays

Custom user-specific components take advantage of the built-in powerful caching and event mechanisms